

Structures - Baby bear's chair

Previous Learning: to know the function of objects.

Next Steps: to use a criteria when planning a structure or mechanism.

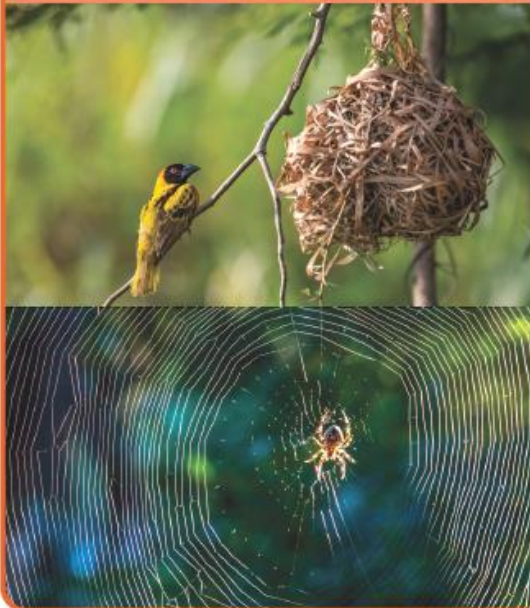
Function	How something works.
Man-made	Made by people.
Mould	To form different shapes out of soft, squishy materials.
Natural	Found in nature e.g. spider's web, sheep's wool.
Stable	Object does not easily topple over.
Stiff	A material or object that does not bend easily (e.g. wood).
Strong	Something that is not easily broken (e.g. wood, brick, building).
Structure	Something that has been made and put together and can usually stand on its own (e.g. a building, a bridge, a chair).
Test	To find out whether something works as it should.
Weak	Something that is easily broken (e.g. paper, egg shells).

Often **structures** have a certain **function**, they are made to do something. e.g. Chairs are for sitting on.



They should be **stable**, **strong** and comfortable. Was baby bear's chair **stable** and **strong**?

Natural Objects



Man-made Objects

