


Vocabulary	
<i>Figurative</i>	Art work which looks like real life.
<i>Horizon line</i>	A line which runs left-to-right. 
<i>Impressionism</i>	The 'impression' of what the person, object, light or place looked like, rather than exactly what it looks like.
<i>Landscape</i>	Natural scenery.
<i>Shading</i>	Drawing darker pencil marks to show darker tones.
<i>Tones</i>	The lightness or darkness of something.

Previous Learning: building on pupils' knowledge of horizontal and vertical lines

Next step: to further develop exploring different artists work

Artists' work looked at:



Peder Severin Kroyer

© Bridgeman Images



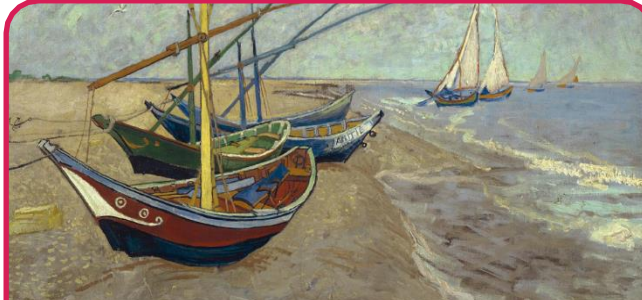
Joaquin Sorolla

© Bridgeman Images



Auguste Renoir

© Bridgeman Images



Vincent Van Gogh

© Bridgeman Images

Key facts

I know the horizon line is where the sky meets the ground.



I know I can make different tints by adding white to my colours to lighten them.



I can create various textures by using different materials to show how things feel when touched.

